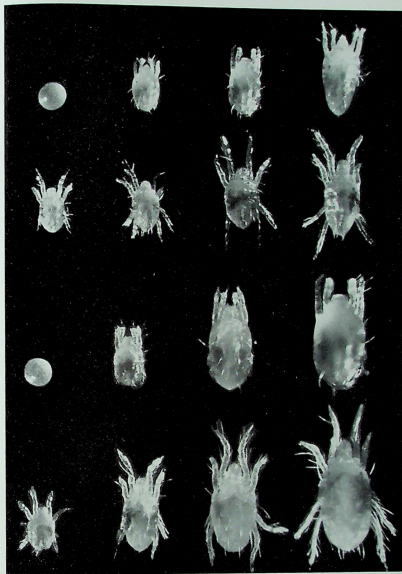
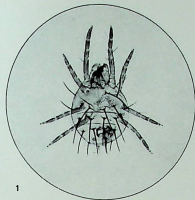


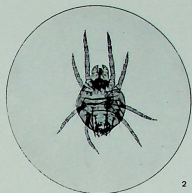
SPIEGAZIONE DELLE TAVOLE

- Tav. I - Epimorfosi di *Tetranychus urticae* Koch.
 1ª fila in alto, da sinistra: novo e stadi di riposo del ♂ (ninfo-crisalide, deutocrisalide e teleocrisalide).
 2ª fila, da sinistra: stadi mobili del ♂ (larva, protoninfa, deutoninfa, maschio).
 3ª fila, da sinistra: novo e stadi di sviluppo della ♀ (ninfa, crisalide, deutocrisalide e teleocrisalide).
 4ª fila, da sinistra: stadi mobili della ♀ (larva, protoninfa, deutoninfa, femmina).
- Tav. II - Fig. 1 - *Metatetranychus ulmi* (Koch): ♀ vista dorsalmente
 Fig. 2 - " " " : ♀ vista ventralmente
 Fig. 3 - *Metatetranychus ulmi* (Koch): ♂ visto dorsalmente
 Fig. 4 - " " " : ♂ visto ventralmente
 Fig. 5 - Uovo d'inverno di *Metatetranychus ulmi* (Koch).
 Fig. 6 - Vari stadi di *Tetranychus urticae* (Koch) sulla superficie inferiore di una foglia di fagiuolo.
- Tav. III - Fig. 1 - *Tetranychus urticae* Koch: ♀ vista dorsalmente.
 Fig. 2 - " " " : ♀ vista ventralmente.
 Fig. 3 - " " " : ♂ visto dorsalmente.
 Fig. 4 - " " " : ♂ visto ventralmente.
 Fig. 5 - *Bryobia rubrioculus* (Scheuten): ♀ vista dorsalmente.
 Fig. 6 - " " " : ♀ vista ventralmente.
- Tav. IV - Ragnatela di *Tetranychus urticae* (Koch) fra foglie di fagiuolo e picciuolo fogliare.
- Tav. V - Fig. 1 - *Tetranychus viennensis* (Zacher): ♀ vista dorsalmente.
 Fig. 2 - " " " : ♀ vista ventralmente.
 Fig. 3 - *Eotetranychus pomii* Sepsasgarian: ♀ vista dorsalmente.
 Fig. 4 - " " " : ♀ vista ventralmente.
 Fig. 5 - *Tetranychus urticae* Koch: tarso I (destro e sinistro) e tarso II.
 Fig. 6 - *Brevipalpus oudemansi* (Geijskes): ♀ vista dorsalmente.
 Fig. 7 - " " " : ♀ vista ventralmente.

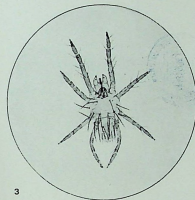




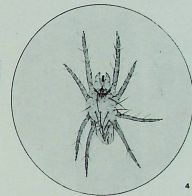
1



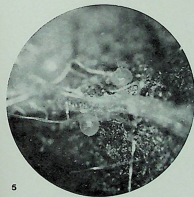
2



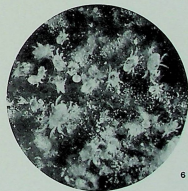
3



4

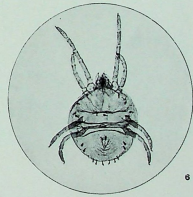
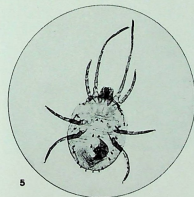
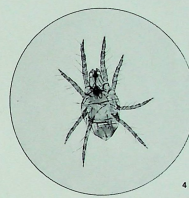
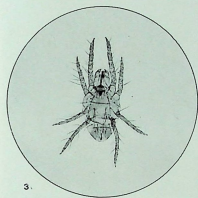
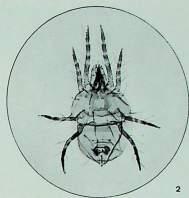
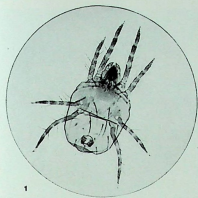


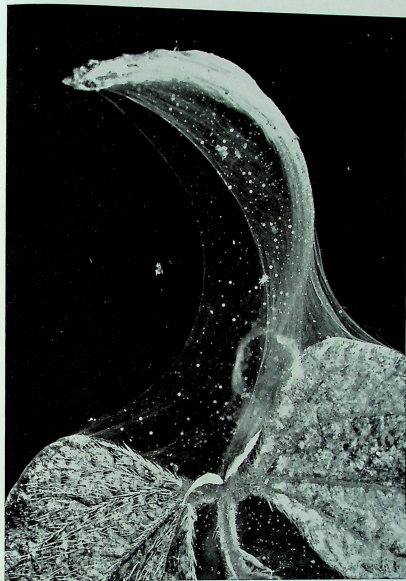
5

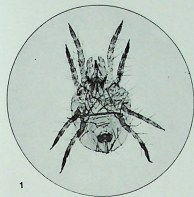


6

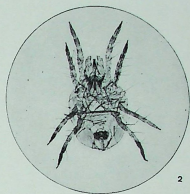




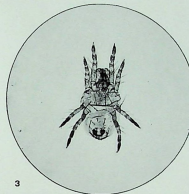




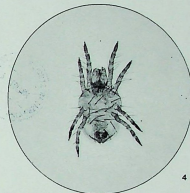
1



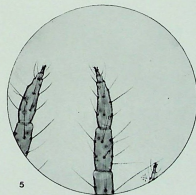
2



3



4



5



6



7

